



130 Ashover Road
Old Tupton, Chesterfield, S42 6HG
Offers Over £350,000

 2  1  2  D

130 Ashover Road

Old Tupton, Chesterfield, S42 6HG

£350,000 (Offers in excess of) Situated in this quiet location, neighbouring stunning Derbyshire countryside and enjoying truly breathtaking views across the grounds of Woodthorpe Hall, is this deceptively spacious and practically set-out 2 bedroom detached bungalow.

Occupying a plot measuring approximately 1/4 of an acre, the property is set back from the road with ample parking to the side and front of the home and a landscaped front garden. To the rear is a large mature garden with lawn and stunning views across open countryside.

Offering 904 sqft of accommodation over 1 storey, the property features a central hallway, side boot room, kitchen with pantry, 2 formal reception rooms including the lounge and dining room, both with fireplaces, bathroom with bath and overhead shower and 2 good-sized double bedrooms.

The property also benefits from a large loft space, measuring 430 sqft, presenting a fantastic opportunity to convert into additional living space - subject to relevant planning consent.

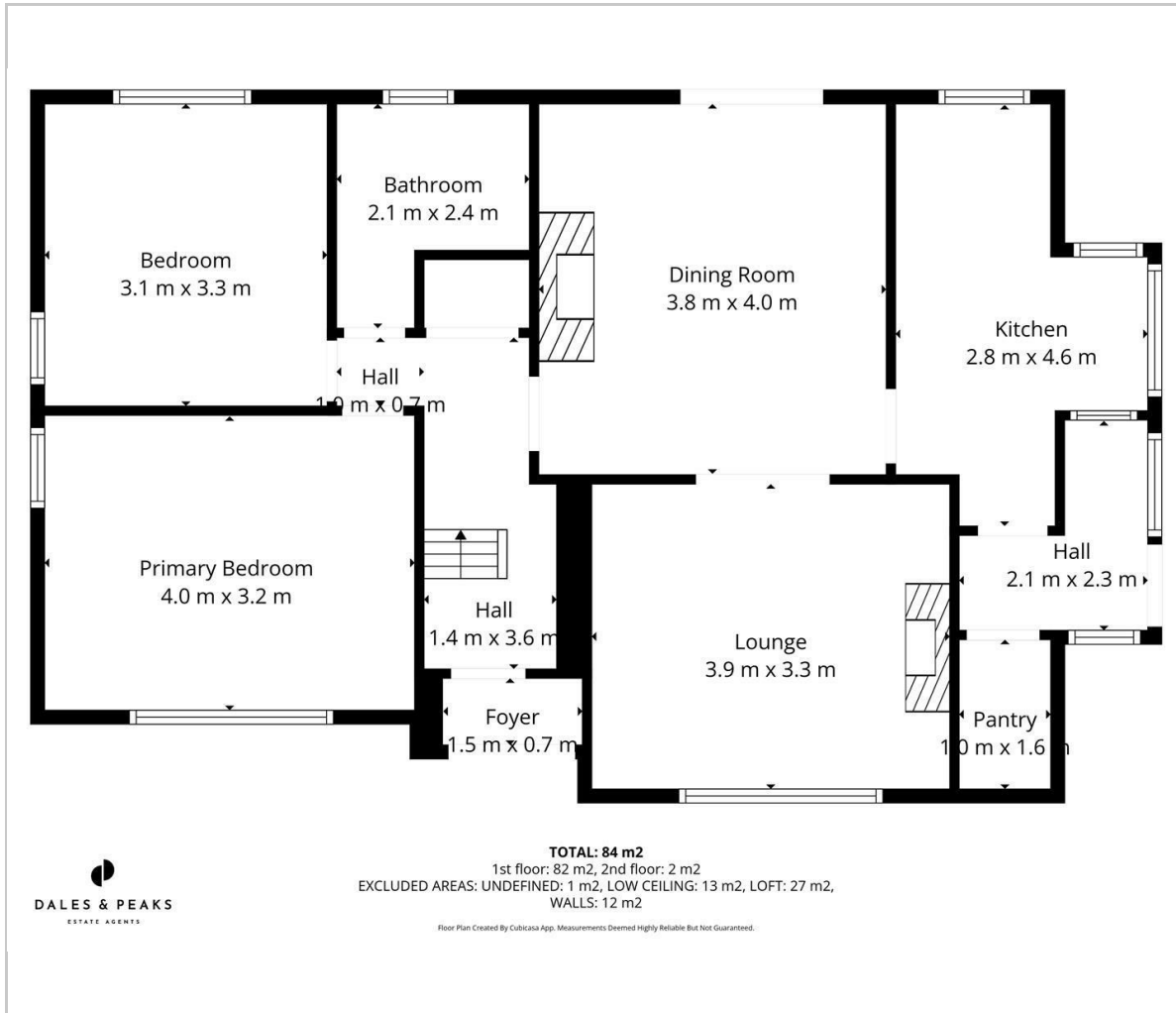
Why Old Tupton?

Dales & Peaks ForwardMove
please read





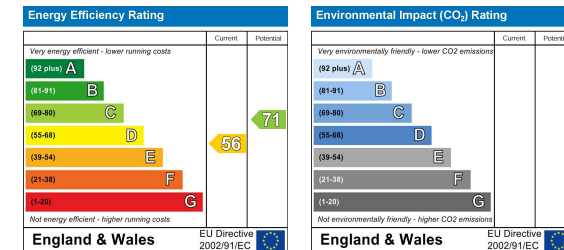
Floor Plan



Area Map



Energy Efficiency Graph



Viewing

Please contact our Chesterfield Office on 01246 567540 if you wish to arrange a viewing appointment for this property or require further information.

These particulars, whilst believed to be accurate are set out as a general outline only for guidance and do not constitute any part of an offer or contract. Intending purchasers should not rely on them as statements of representation of fact, but must satisfy themselves by inspection or otherwise as to their accuracy. No person in this firm's employment has the authority to make or give any representation or warranty in respect of the property.



131 Chatsworth Road, Chesterfield, Derbyshire, S40 2AP
 T: 01246 567540

E: info@dalesandpeaks.co.uk
 www.dalesandpeaks.co.uk